

2019-20 Annual Budget Report



SPARTANS

SAN JOSÉ STATE UNIVERSITY

Charlie Faas

VP Administration & Finance/CFO

Interdisciplinary Science Building (ISB)



AS House



South Parking Garage



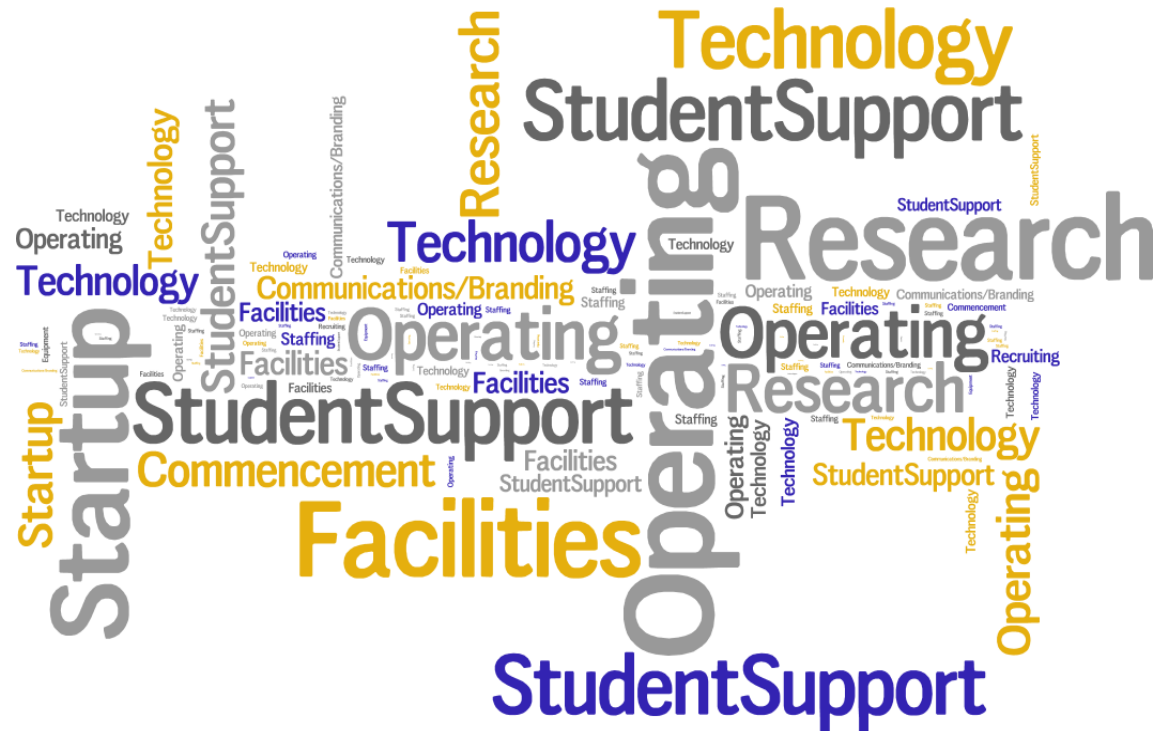
Alfred E. Alquist Building



- Interdisciplinary Science Building on schedule and on budget to open in January 2022, an 8-Floor “Statement” Building \$181M
- South Parking Garage includes 1,500 new spaces, student recreation field and community track, opening in Fall 2020
- Alfred E. Alquist Building, potential to be transformed into a mixed-used facility with faculty and staff housing in the heart of downtown San Jose



- Faculty Start-up
- Research Growth
- Academic Affairs Base True-up
- Grow Graduate Studies
- Establish Doctorate in Nursing Practice
- Safety
- Academic Facilities
- Data Analytics
 - Institutional Effectiveness and Strategic Analytics



Word cloud displays frequency and relative size of budget requests by general category

- Fund Positions
- 5% Retention of non-salary (OE&E) budgets for division flexibility
- New State Funds = \$20.5M (Base)
 - Graduation Initiative 2025 \$2.4M
 - Enrollment Growth (569 FTES/2.5%) \$5.7M
 - Compensation Adjustments \$10.5M
 - Retirement & Health Adjustments \$1.9M
- Special State Allocation for Alquist Study, \$250K

inspire
JOURNEY

Goal 1: Engage and Educate

Goal 2: Excel and Lead

Goal 3: Grow and Thrive

Goal 4: Connect and Contribute

Goal 5: Rebuild and Renew

Goal 1: Engage and Educate

- | | |
|------------------------------|--------|
| ■ Graduation Initiative 2025 | \$4.4M |
| ■ Faculty Start-up | \$1.6M |
| ■ Academic Affairs True-up | \$3.2M |
| ■ Research | \$1.0M |

73 tenure-track faculty positions are under recruitment this year

- *23 are new/additional positions*

Goal 2: Excel and Lead

- | | |
|---|--------|
| ■ Doctorate of Nursing Practice | \$552K |
| ■ Graduate Studies | \$351K |
| ■ Institutional Effectiveness and Strategic Analytics | \$50K |
| ■ Alfred E. Alquist Building Study | \$250K |

Goal 3: Grow and Thrive

- Advancement Campaign \$500K
- EAB License \$100K
 - CSU Student Success Collaborative
- IT Infrastructure \$700K
 - Incremental & New Software Licenses
 - Two Factor Authentication for Students
 - Accessibility Technology Initiative (Chancellor's Office)
 - Test Environment for Security Patching

Goal 4: Connect and Contribute

One Time Funding

- | | |
|---|--------|
| ▪ Strategic Communications | \$510K |
| ▪ Video Streaming Equipment
<i>(Mountain West requirement)</i> | \$500K |

Goal 5: Rebuild and Renew

- Campus Safety Cameras \$500K
- Deferred Maintenance Cost Match \$1.1M
(Matches \$20M from State)
- Academic Space/Furniture Refreshes \$900K
(Includes Audiology Doctorate space)

Operating Fund Expenditures by Division FY19-20 Budget

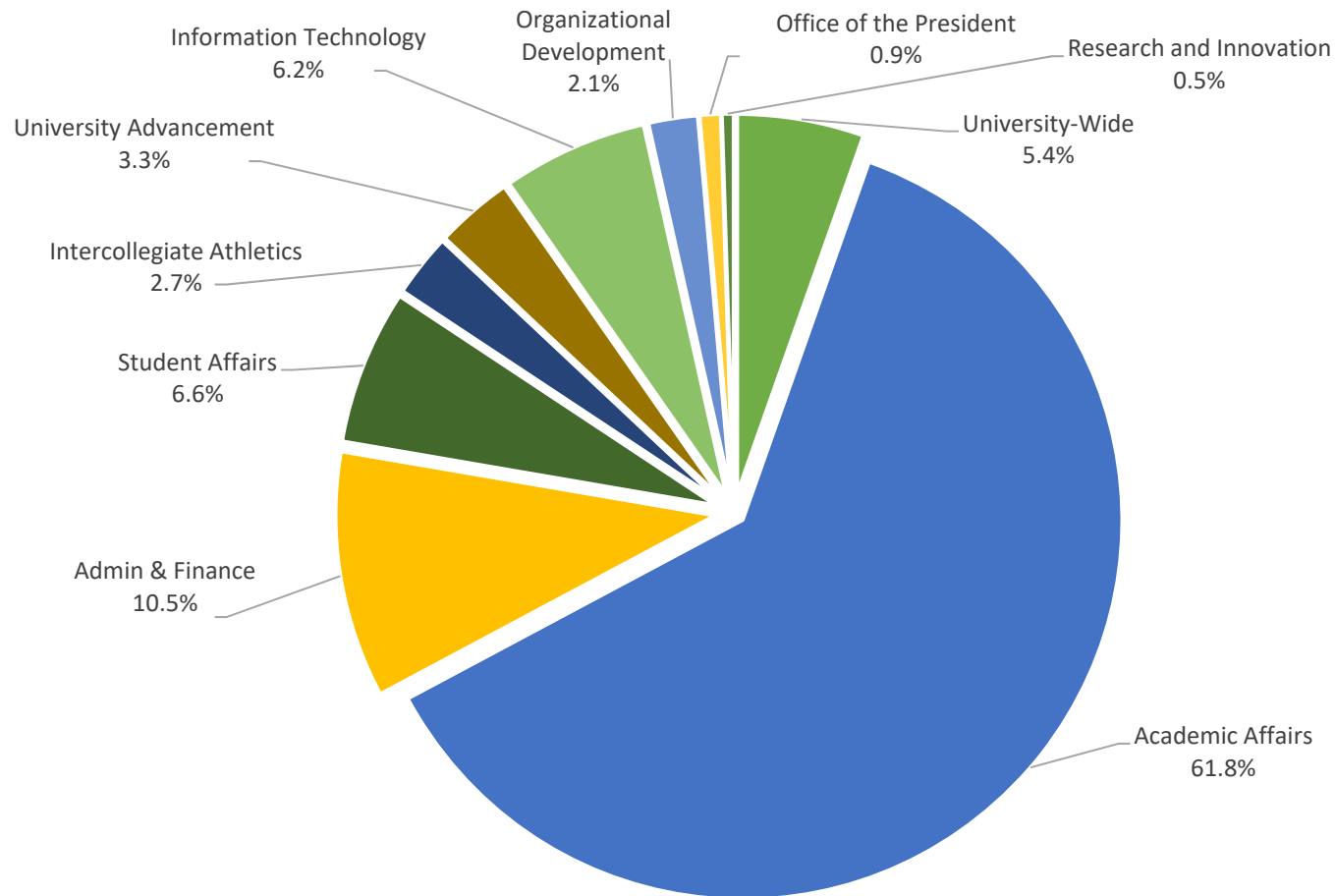
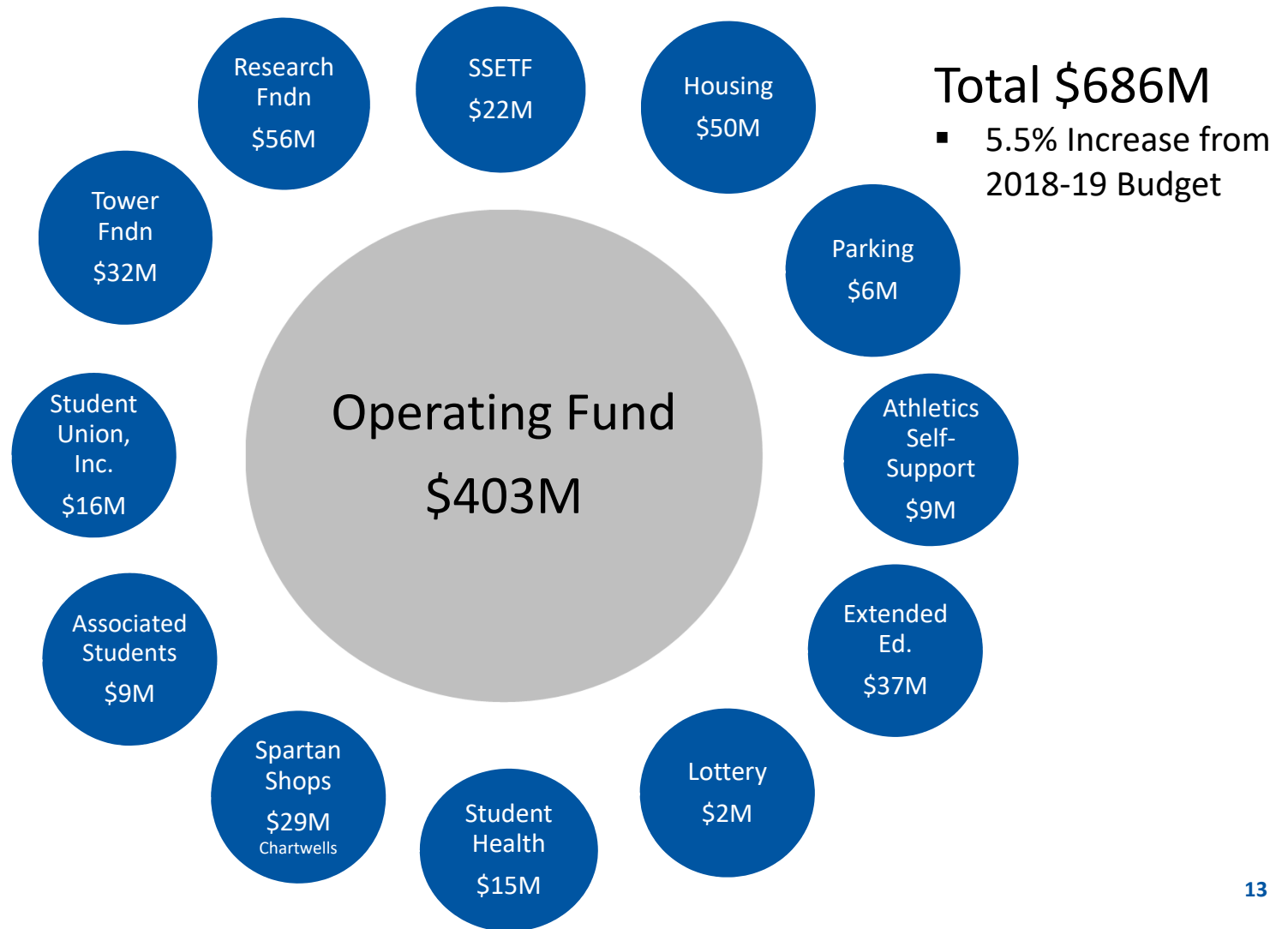
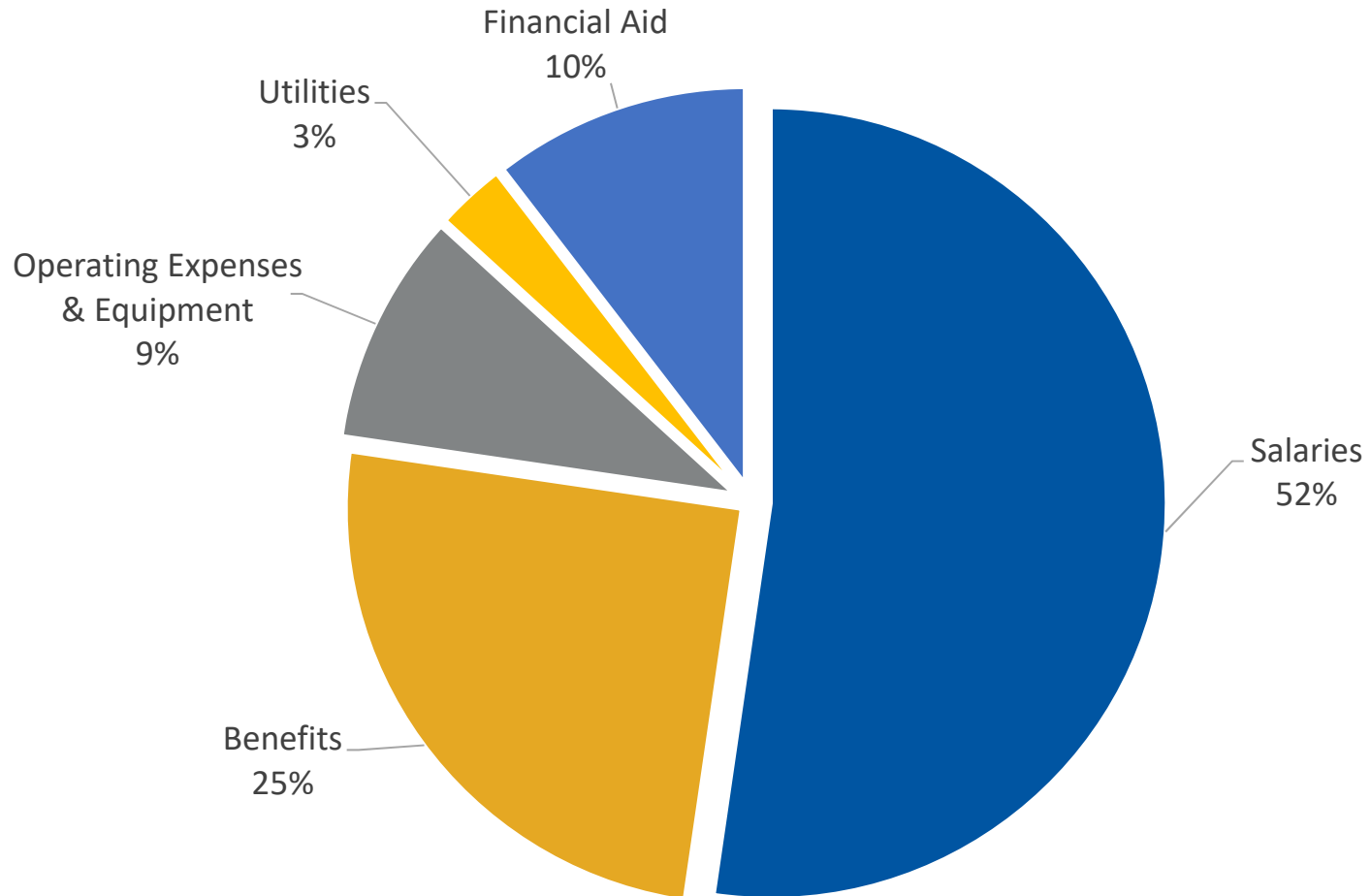


Chart above displays the breakdown of the Operating Fund base expenditure budget. Budget excludes Restricted Student Aid (primarily a U-Wide tuition discount). Employee benefits have been estimated for all Divisions at a rate of 48%. More details are available in the Annual Budget Report.





- Aging Campus
- Main Campus - New Buildings (2016 – Present)
 - Student Union Expansion and Renovation
 - Student Health and Wellness Center
 - Student Housing CV 2
 - Student Recreational and Aquatic Center
 - Interdisciplinary Science Building
- New Area - South Campus (2016 – Present)
 - Golf
 - Softball
 - Soccer
 - Tennis
 - Beach Volleyball
 - Parking Garage
- **Campus Master Plan – RFP Process**
 - Duncan/Old Science (2026-28)
 - Student Housing CV 3
 - Alquist
 -
 -

Aging Campus





For more information, visit:

http://www.sjsu.edu/finance/about_us/budget/budget_reports/

http://www.sjsu.edu/adminfinance/about/budget_central/

SAN JOSÉ STATE UNIVERSITY *powering* SILICON VALLEY



Appendix



SPARTANS

SAN JOSÉ STATE UNIVERSITY

Revenue Sources

- Operating fund, SSETF-IRA, ticket sales, conference distribution, game guarantees, NCAA distribution and development

Functions

- Supports operating and travel costs for all sports
- Grants in Aid for student-athletes

Highlights / Accomplishments

- Spartan Golf Complex facility
- Recruit and retain top athletes by providing financial incentives through scholarship
- New softball field opened in Spring 2019
- Soccer field improvements
- New tennis facility
- Student athletes received various academic and performance awards from Mountain West Conference and other organizations

Revenue Sources

- Student Health & Health Facility Fees
- Fee-for-service

Functions

- Support and provide student health & mental health services
- Promote health and well-being of student community
- Specialty services include: dermatology, podiatry, and sports medicine

Highlights / Accomplishments

- Student Health & Wellness Center facility
- Increased Counseling & Preventative Health support
- Over 18,000 student visits to clinical services and wellness programs in 2018-19

Revenue Sources

- Housing rent and fees
- Other lodging and conference fees
- Rent for Dining Commons and Village Market

Functions

- Support housing operations & programs

Highlights / Accomplishments

- Over 4,000 residents
- Campus Village II opened in Fall 2016
- Renovations in Washburn Hall, Joe West Hall
- Currently reviewing opportunity for Campus Village III

Revenue Sources

- Parking permit sales and parking citation fines

Functions

- Parking operations and enforcement costs
- Maintenance and repair to existing facilities
- Alternative transportation program

Highlights / Accomplishments

- Parking garage cameras, security improvements
- Parking permits available online
- Ongoing assessment of parking inventory and demand, solutions
- Minor applicant approval process improvement

Revenue Sources

- Tuition and fees from for-credit & noncredit programs

Functions

- Extended ed. operations and program/curriculum development

Highlights / Accomplishments

- Partnership with College of Science to build out part of new Interdisciplinary Science and Innovation Building
- 6% growth in program last year; expected growth in a number of new programs

Revenue Sources

- Student Success, Excellence & Technology Fee
- Expenditures reviewed by CFAC & approved by President

Functions

- Instructionally Related Activities
- Course Support
- Student Success

Supported Initiatives

- Spartan Scholars Program
- SASS Programs (Task Forces)
- Academic Technology Improvements

Revenue Sources

- Fees, program revenues, grants and contracts
- Fee changes must be approved by student referendum

Student fees support AS programs

- Student Leadership and governance
- Child Care Center, AS House, and bike enclosures
- Campus Life
- Transportation
- Full service computer lab

Revenue Sources

- Federal and state grants and contracts, fees, investment income, and other revenues

Restrictions

- Most funding tied to grants or specific programs

Highlights / Accomplishments

- The Research Foundation also provides employment support to more than 1,800 individuals, including faculty, students, research affiliates, and staff
- Program sites are located on the SJSU main campus, Moss Landing Marine Laboratories, NASA-Ames Moffett Field, and several other national and international locations

Revenue Sources

- Dining, event, retail, and real estate services, commissions, interest and other income

Division Functions

- Dining Services provided by new vendor, Chartwells
- Retail Services operates the Barnes & Noble Bookstore; the current contract extends through June 30, 2026
- Management of daily operations for grounds and Friends of Spartan Golf at the Spartan Golf Complex
- Real Estate Services to SJSU faculty and staff

Revenue Sources

- Mandatory Student Union Fee, Rental Income, and Commissions

Functions

- Supports Student Union Operations
- Houses a variety of food and entertainment venues
- Meeting places for student organizations
- Spartan Bookstore location

Highlights / Accomplishments

- Newly opened Student Recreation & Aquatic Center (SRAC)
- New facility has expanded recreational activity and services offered to the campus and surrounding community

Revenue Sources

- Gifts, pledges, investment income

Functions

- As a 501(c)(3) auxiliary organization, Tower Foundation directly manages all financial aspects of funds donated to San Jose State University
- Tower Foundation Board approves the annual endowment distribution rate (4% for FY19-20)

Highlights / Accomplishments

- \$150+ million endowment comprised of over 650 individual funds
- Gearing up for Transformation 2030 strategic goals